



TELLUS POWER GREEN

# TELLUS POWER GREEN DC FAST CHARGER

30kW Wall Mount  
DC Fast Charging Station



# TELLUS POWER GREEN DC FAST CHARGER

## Specifications



Product #	TP5-30-480
Input	480VAC (3P+N+PE)
Frequency	60Hz
Output Voltage	150 to 1000VDC
Output Current	0 to 100A
Connector(s)	CCS1 or CHAdeMO
Efficiency	≥94% at nominal output power
Power Factor	> 0.98
Operating Temperature	22°F to 131°F (-30°C to 55°C)
Working    Storage humidity	≤ 95% RH    ≤ 99% RH (Non-condensing)
Altitude	< 6600ft (2000m)
Display	7" LCD with touch screen
RFID system	ISO    IEC 14443A/B
Dimensions (l x d x h)	21" x 12" x 27"
Protective Class	NEMA 3S, IK 10
Cooling System	Air cooled
Weight	176 lbs (80kg)
Charging Protocol	Mode 4, IEC-61851, ISO-15118, DIN SPEC 70121
	Mode 4, CHAdeMO 0.9, 1.0
Length of charging cable	16ft (5m)
Interface protocol	OCPP 1.6J
Communication	Ethernet / 4G Wi-Fi
Electrical Safety: GFCI	RCD 20 mA Type A (UL)
Electrical Safety: Surge Protection	20 kA
Electrical Safety General	Over Voltage, Under Voltage, Over Current, Missing Ground
Electrical Safety: Output Short	Output power disabled when output is short circuited
Electrical Safety Temperature	Temperature Sensors @ Charge Coupler and Power Electronics
Emergency Stop	Emergency Stop Button Disables Output Power
Regulatory Compliance	UL-2202    EMC: EN 61000-6-1:2007, EN 61000-6-3:2007/A1:2011/AC:2012

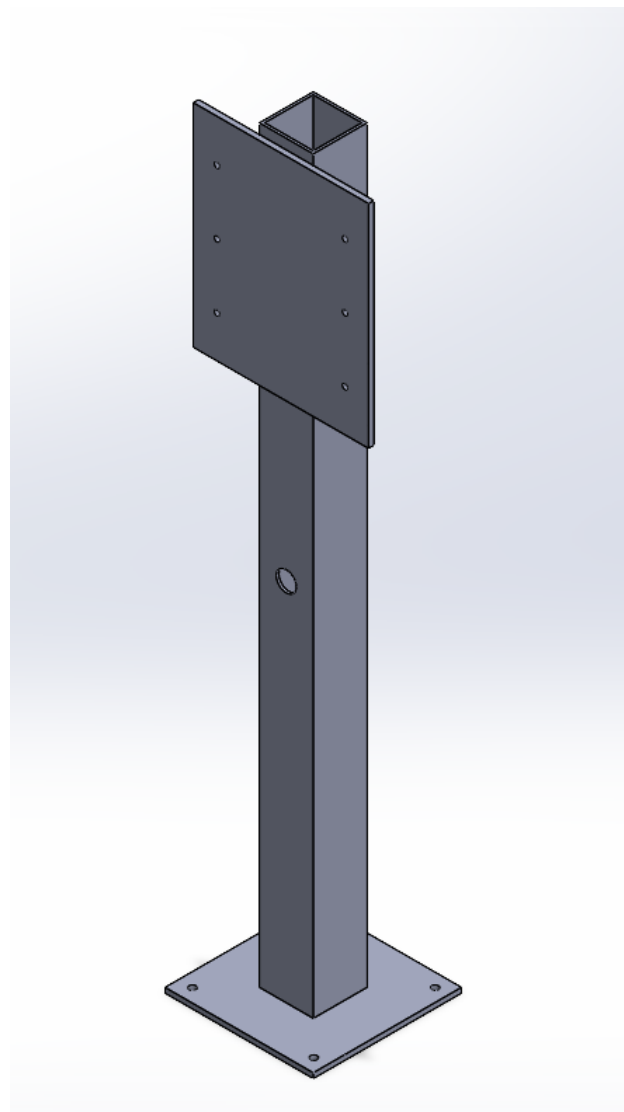




**TELLUS POWER GREEN**

## 30kW DCFC Pedestal

Installation Manual (20220630)



### Contact Information

Tellus Power Green

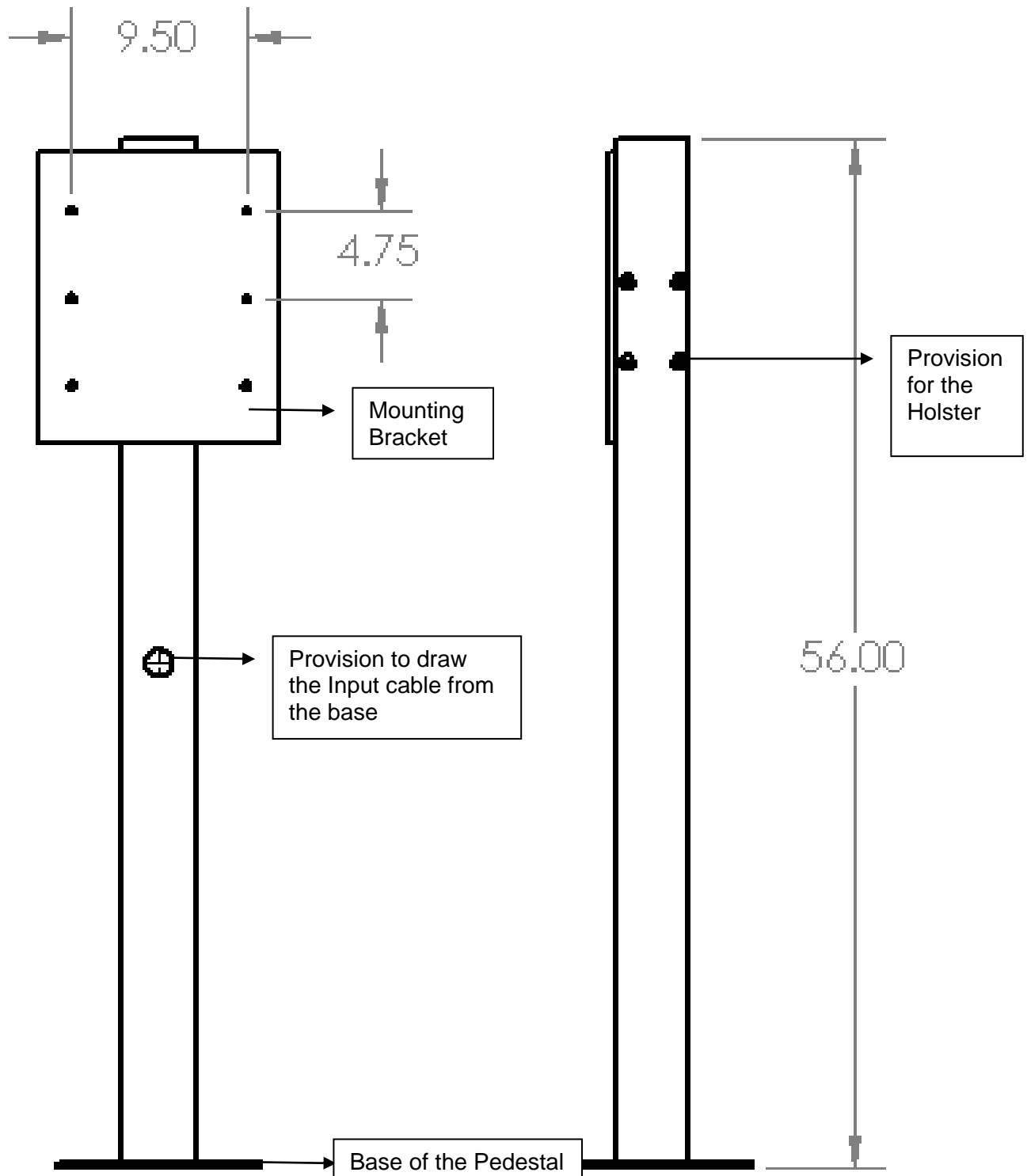
23541 Ridge Route Drive Suite B, Laguna Hills, CA 92653

[support@telluspowergreen.com](mailto:support@telluspowergreen.com)

+1 949 860 1700

## 30kW DC Fast Charger Pedestal Dimensions

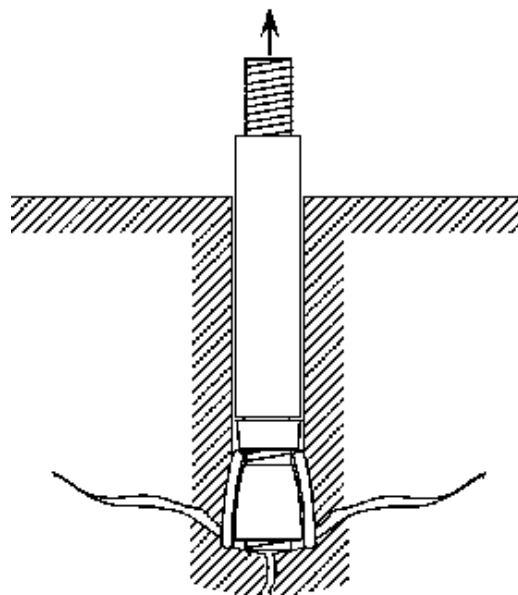
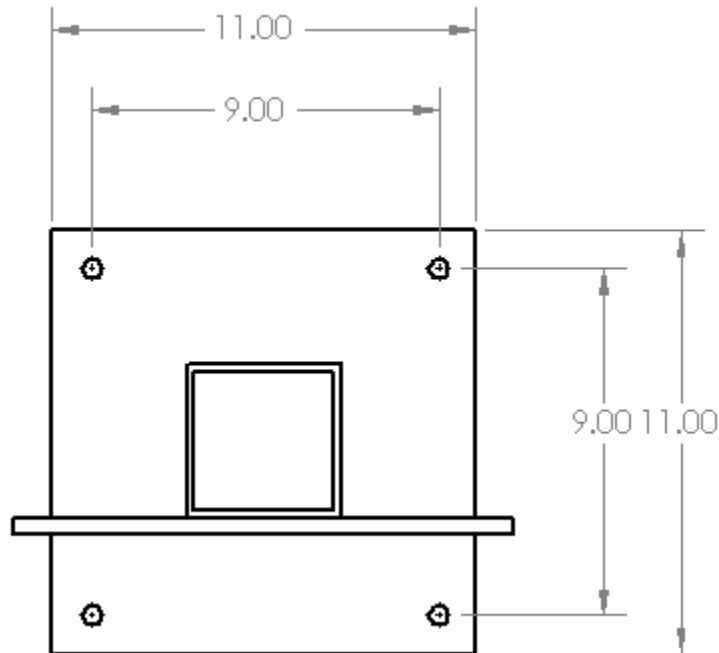
Below is the 2D representation of the 30kW Pedestal Unit. The height of the pedestal and the distance between each screw hole on the mounting plate along is detailed. All the dimensions are in inches.



## Installing Pedestal to Base

It is recommended that the pedestal is installed on a concrete floor or pad. Please note the dimensions of the base prior to installing. It is a perfect square, so it is symmetrical on all sides. Install using the anchors screws. These anchors will be provided along with the pedestal unit (Units are in inches)

The input cable for the charging station should be routed through the base of the pedestal and will be drawn out through the hole provisioned on the front side the pedestal unit.

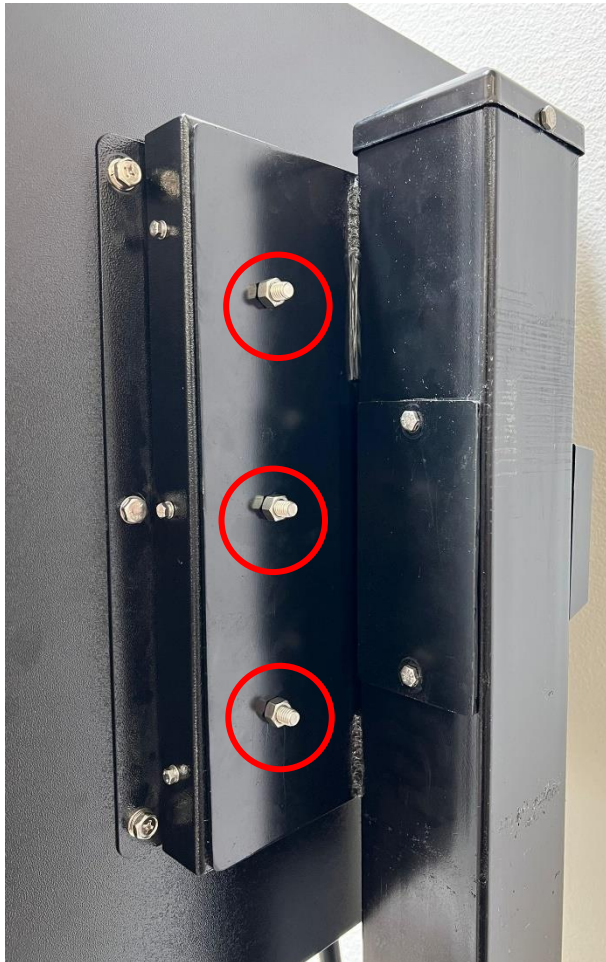




## Mounting Charger to Pedestal

Install charger as shown in the figures below using the screw sizes provided below (not included).

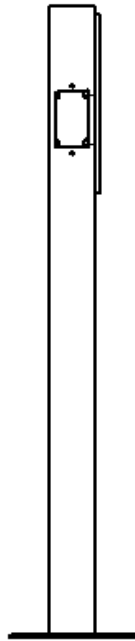
- 3/8"-16x1 Hex Screw
- 3/8"-16 Hex Nut
- 3/8" Split Washer
- 3/8" Flat Washer



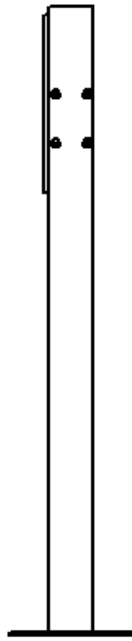
## Mounting Charger Holster to Pedestal

Remove access panel on the left side of the charger. Locate the holes that will secure the holster. Now align holster with holes and fasten down using the screw sizes provided below (not included).

- Bolt
- Nut
- Washer



Left Side



Right Side

