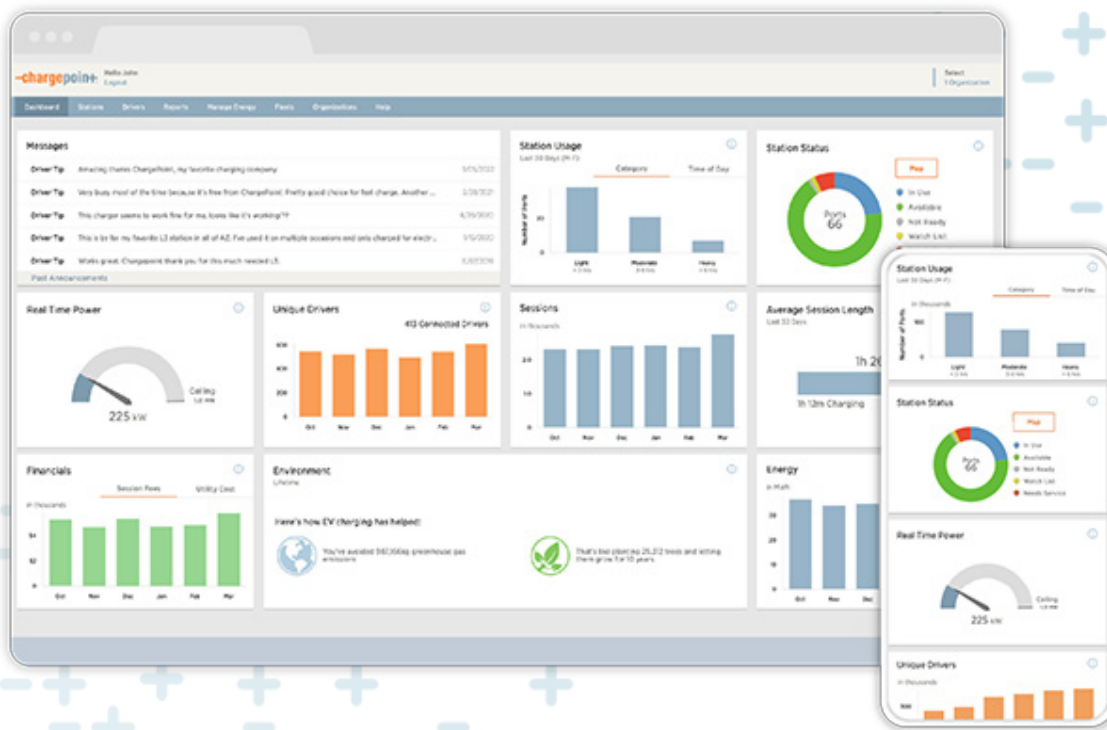


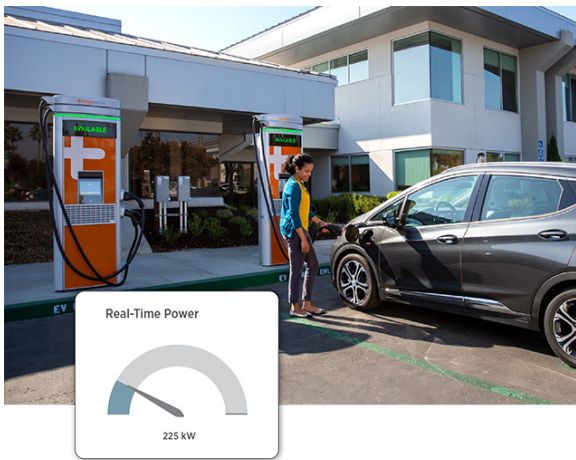
ChargePoint software

The leading platform for EV charging



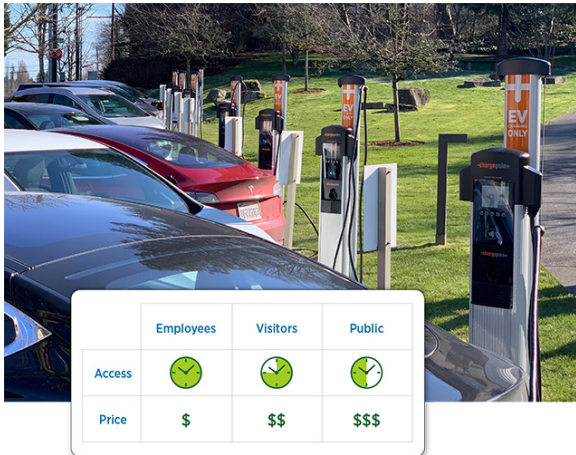
Get complete control and rich insights with unified EV charging management software, all part of the ChargePoint network.

Meet your new charging command center



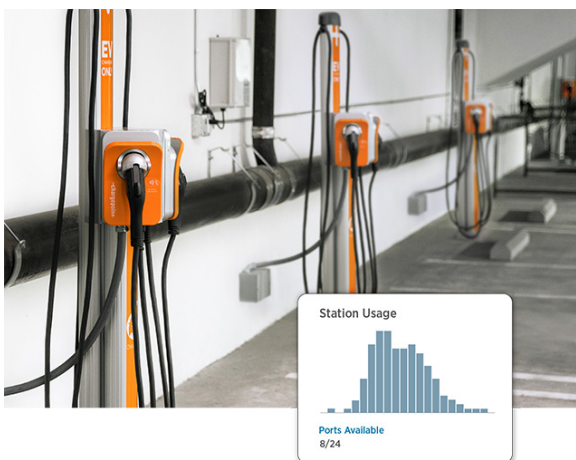
Real-time visibility

Get real-time visibility to better manage charging, including driver details, power use, energy costs, driver revenue and station status.



Complete control

Set prices based on driver type, session length, energy cost and time of use, and remotely manage driver access for security and peace of mind.



Actionable reporting

Leverage more than 35 prebuilt charts and reports to understand station usage, session fees, utility costs, station health, environmental impact and more.



Automated station management

Built-in station software offers dynamic charging, proactive monitoring and full vehicle interoperability.

Dynamic charging

Get rich, advanced diagnostics on station health, including on stations that need service, to help improve uptime and usage.

Proactive monitoring

Get rich, advanced diagnostics on station health, including on stations that need service, to help improve uptime and usage.

Full interoperability

Ensure that any EV can charge seamlessly with any ChargePoint station.

Top-rated driver app

The top-rated ChargePoint mobile app connects drivers to stations so they can easily find a charge when they need it.

All-in-one app

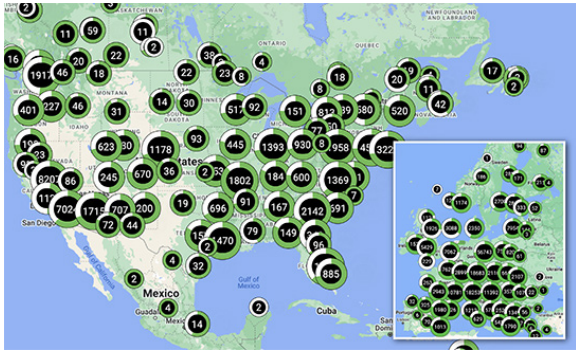
The ChargePoint app makes it easy for drivers to find available stations, start charging and get updates when their EV is fully charged. Drivers can use the Waitlist feature to easily reserve a station.

Charge with any station

Drivers can leverage ChargePoint's network and roaming partnerships to charge with any station, including non-ChargePoint stations.

Streamlined driver experience

Easily charge at work, home, en-route, and across other commercial locations, with ChargePoint's suite of stations available for every use case.



Industry-leading network

ChargePoint's roaming partnerships enable drivers to use third-party stations with their ChargePoint account, and ensure drivers from supported third-party networks can use public ChargePoint stations.



Turnkey API integrations

Leverage the ChargePoint open API and more than 40 integrations to streamline data sharing across your organization. Connect all aspects of your charging program using one intuitive solution, including OCPP-capable chargers.

Let's get started

Ready to deploy networked charging for your organization? Our EV charging experts will help you identify your charging goals, advise on the best approach and help evaluate your site.

Learn more at chargepoint.com or email sales@chargepoint.com.

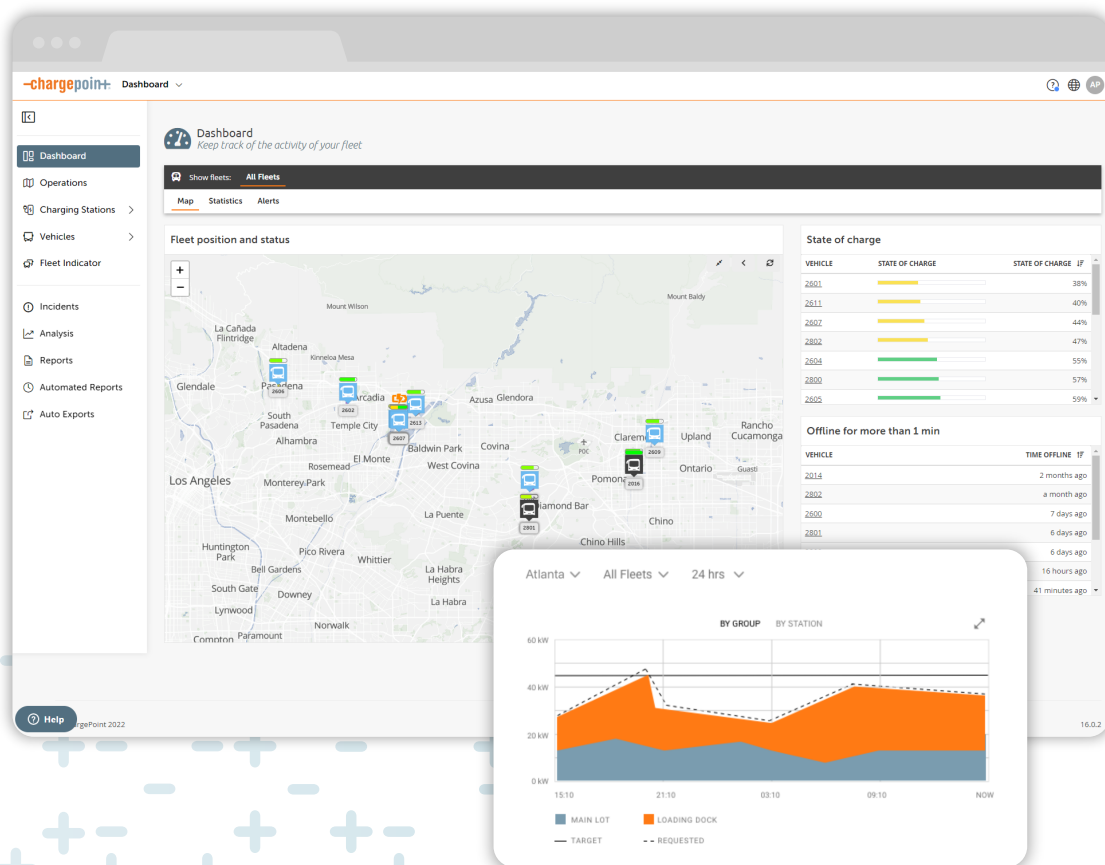
Guillevin: jeff.hoogveld@guillevin.com

ChargePoint, Inc. ("ChargePoint") reserves the right to alter product offerings and specifications at any time without notice. ChargePoint is not responsible, and disclaims any and all liability, for typographical or graphical errors, inaccuracies, or incompleteness that may appear in this document. This document does not expand or otherwise modify ChargePoint's terms and conditions of purchase, including but not limited to the warranty expressed therein.

Copyright © 2021 ChargePoint, Inc. All rights reserved. CHARGEPOINT is a U.S. registered trademark/service mark, and an EU registered logo mark of ChargePoint, Inc. ASSURE and CHARGEPOINT AS A SERVICE are U.S. registered trademarks of ChargePoint Inc. All other products or services mentioned are the trademarks, service marks, registered trademarks or registered service marks of their respective owners.
BR-EXPRESS-PLUS-07. November 2021. PN 73-001078-05-1.

ChargePoint Software

Powerfully simple EV fleet management



Streamline operations and deliver lowest total cost of ownership with our integrated platform.

The future of fleets is electric —

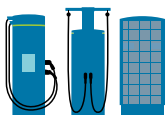
and, for more and more companies, that future starts today. Electric vehicle (EV) fleet sales have more than doubled on a year-over-year basis in key vehicle segments — and thanks to total cost of ownership (TCO) savings of up to 25% and emissions reductions of 50% or more for first movers, that growth will only accelerate.

Our mission is to accelerate the adoption of commercial zero-emissions transportation on a global scale. To achieve this, we've built the world's most comprehensive all-in-one fleet management software solution to help fleet managers optimize their operations. As the leading platform for EV fleets, our fleet management software helps you maximize fuel savings so you can go electric with confidence.

Are you ready for the electric revolution?

The ChargePoint Team

Your partner for every step toward electrification



200,000+
activated charging ports



8,000+
connected fleet vehicles



123 million
charges delivered
(and counting)



80%
of Fortune 500
businesses are
ChargePoint customers

Go electric with confidence

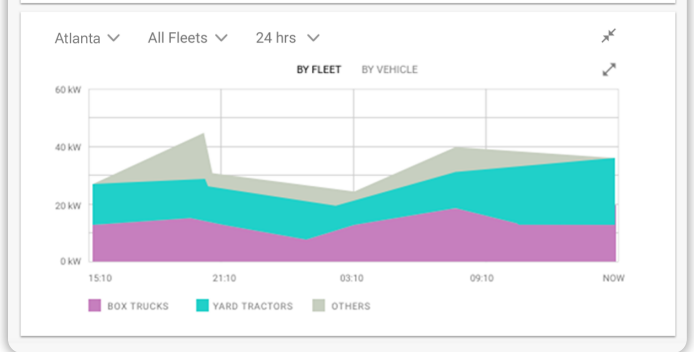
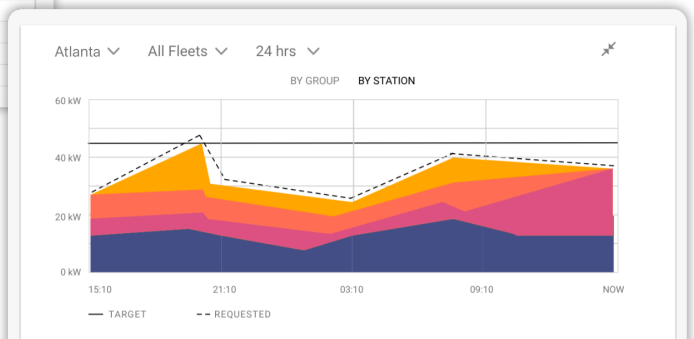
DEPOT
SD Distribution Center

Overview Settings Alert History

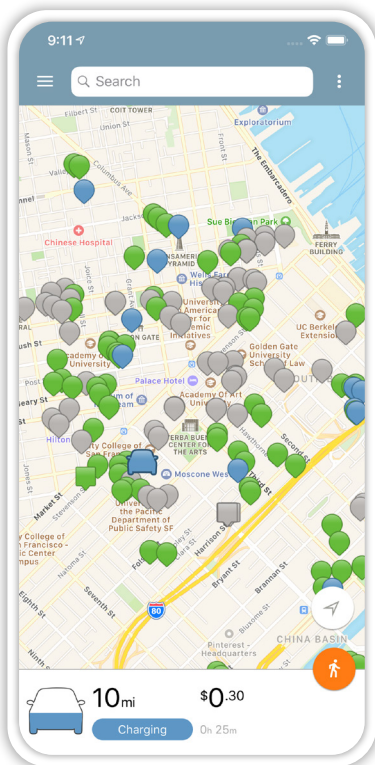
Vehicle, fleet, or charger name. **Fleets (2)** | Showing 19 matches **View as Map**

Charger	Vehicle	Fleet	Status	Trip #	Trip Length	SOC	Estimated Range (mi)	Pull Out	Charge Com.
A-Port 1	8935	Box Truck	Charging	7171	170	62%	115	05:10	04:45
A-Port 2	8936	Box Truck	Ready	7175	85	80%	129	13:13	13:13
B-Port 1	8937	Box Truck	Ready	7173	160	60%	129	08:00	10:10
C-Port 2	8938	Box Truck	Charging Late	7181	120	16%	36	07:27	09:02
D-Port 2	8939	Box Truck	Charging	7171	150	20%	38	13:10	12:45
East Depot Ch...	8940	Box Truck	Charging	7179	123	10%	12	08:55	08:00
E-Port 2	8942	Box Truck	Ready	7162	120	73%	129	05:10	06:00
F-Port 1	8943	Box Truck	Charging	1215	112	60%	115	13:13	13:13
G-Port 1	8944	Box Truck	Ready	1210	150	91%	120	08:00	07:10
G-Port 2	8945	Box Truck	Charging	7171	150	20%	38	13:10	12:45
East Depot Ch...	8946	Box Truck	Charging	7179	123	10%	12	08:55	08:00
H-Port 1	8950	Box Truck	Ready	7162	120	73%	129	05:10	06:00
H-Port 2	8953	Box Truck	Charging	1215	112	60%	115	13:13	13:13
I-Port 1	8954	Box Truck	Ready	7175	85	80%	129	13:13	13:13
I-Port 2	Unknown	Box Truck	Charging	-	-	-	36	-	-
-	8955	Box Truck	Start at 20:00	7166	133	20%	38	-	-
-	8956	Box Truck	Start at 21:00	7176	153	20%	38	-	-
-	8959	Box Truck	Start at 21:00	7178	115	80%	144	-	-
-	8960	Box Truck	Late Plug In	7171	115	80%	12	-	-

Streamline operations



Maximize fuel savings



Charge anywhere

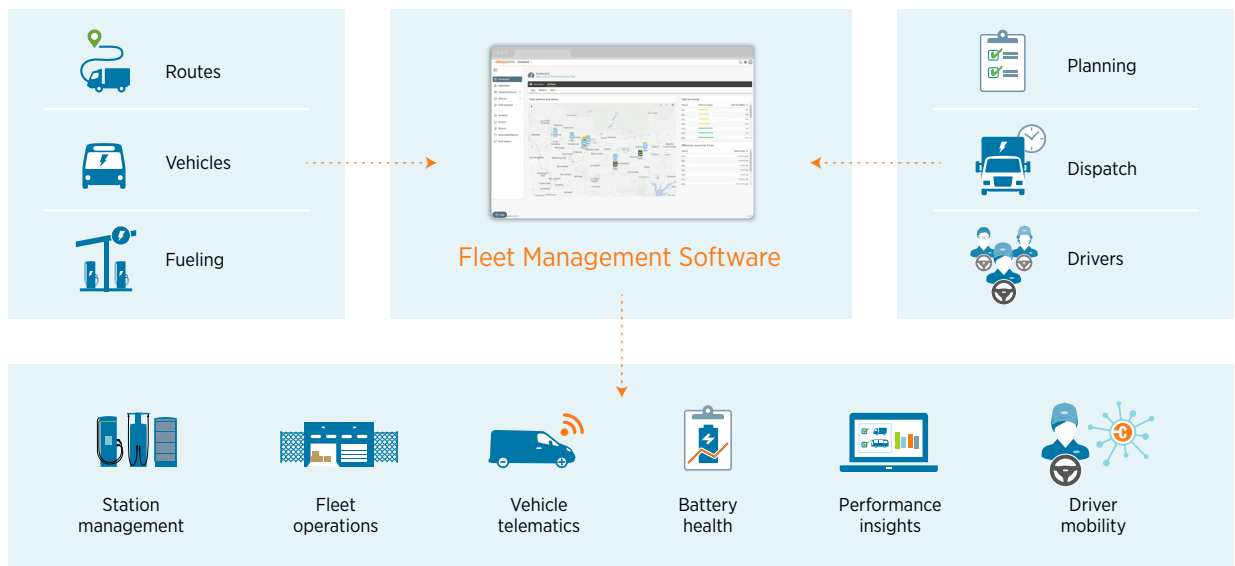


All you need in one place

From station and vehicle management to real-time insights and advanced reporting, get all the tools you need to manage your fleet and increase efficiency from one seamless interface.

We integrate with any OEM and connect both electric and non-electric vehicles.

Simplify EV management and maximize fuel savings



Our fleet management platform

ChargePoint's industry-leading software platform puts the future of fleet management at your fingertips.

Give your electric fleet a head start with



Charge Management

Get real-time visibility into EV station status and health to ensure operational readiness at the lowest cost with automated charging based on time of day, demand charges and other factors.

Unlock the full benefits of your electric fleet with



Telematics

Optimize your EV fleet performance with rich insights. Improve efficiency, increase uptime, automate reports and optimize battery health.

Count on charging anywhere with



Mobility

Manage charging activities no matter where your drivers need to go — at work, on route or at home — and manage payments seamlessly.

Designed to integrate

In addition to connecting all your vehicles and chargers, our platform is also designed to integrate with your existing IT systems. Thanks to the open architecture based on API connections, ChargePoint integrates at scale to connect every part of your EV fleet management systems seamlessly — including asset monitoring, charge management, routing, telematics, fuel cards, roaming and more.



Powered by ChargePoint hardware

Meet the DataHub, a powerful onboard unit designed to support our fleet software and specifically designed for eBuses and heavy-duty electric commercial vehicles. The DataHub connects to the vehicle via the CAN Bus and can record and send data at the millisecond level.



- + Small, efficient, easy to install
- + Always in compliance with the highest security standards
- + Continuously monitored, always online and crash-resilient with automatic recovery
- + Built-in app layer for running your systems

[Download Datasheet](#)

Fleet resource center

Looking to deepen your knowledge in the zero-emission fleet field? Check out our free reports and white papers based on real, anonymized data. [Go to the Fleet Resource Center](#)



Get in touch

Curious to see a live demo of our system and learn how it can help you improve your fleet operations and save on costs?

Our EV experts are ready to help.

[Connect With an Expert](#)

Guillevin: jeff.hoogveld@guillevin.com

ChargePoint, Inc. ("ChargePoint") reserves the right to alter product offerings and specifications at any time without notice. ChargePoint is not responsible, and disclaims any and all liability, for typographical or graphical errors, inaccuracies, or incompleteness that may appear in this document. This document does not expand or otherwise modify ChargePoint's terms and conditions of purchase, including but not limited to the warranty expressed therein.