



The leading charging management solution for EV fleets

Centralize visibility

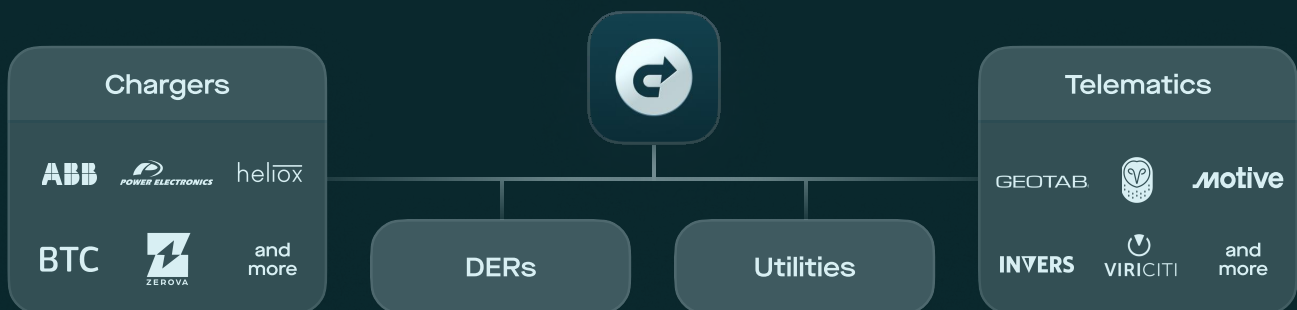
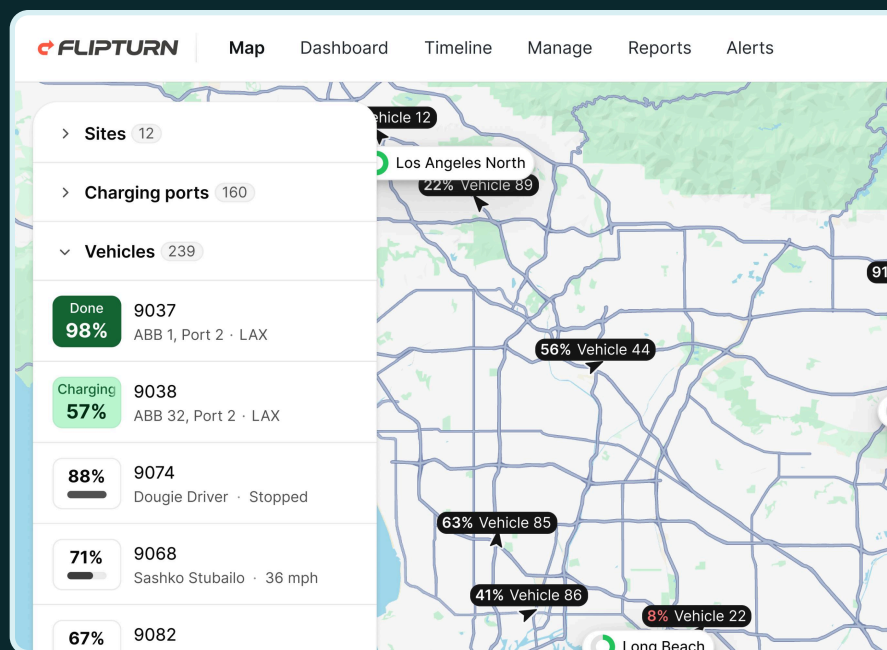
All the data you need to run your operations in one real-time, hardware vendor agnostic software platform

Optimize charging costs

Power management minimizes costs and integrates with schedules to make sure vehicles are ready to depart on time

Maximize uptime

Real-time, detailed visibility and alerting for charging issues, vehicle range, and maintenance indicators



Learn more

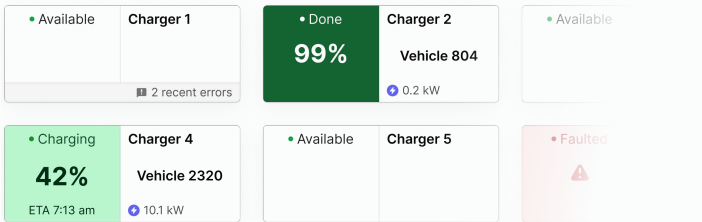
Email hello@getflipturn.com

Visit getflipturn.com/getdemo

Flipturn's best-in-class product gives you full power at your fingertips

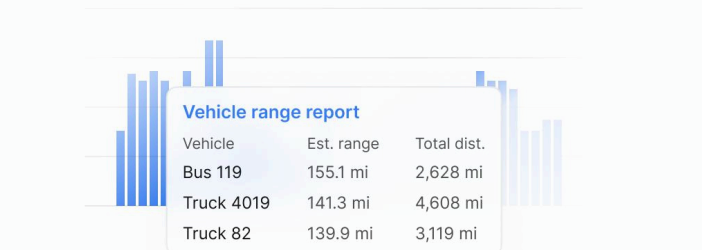
Scannable dashboard for monitoring charging

Quickly spot charger availability, when vehicles are scheduled to finish charging, and malfunctioning chargers.



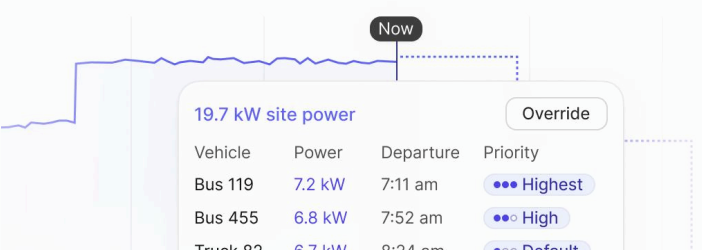
Range reporting & prediction

Understand the real operational range of your vehicles across different routes and conditions.



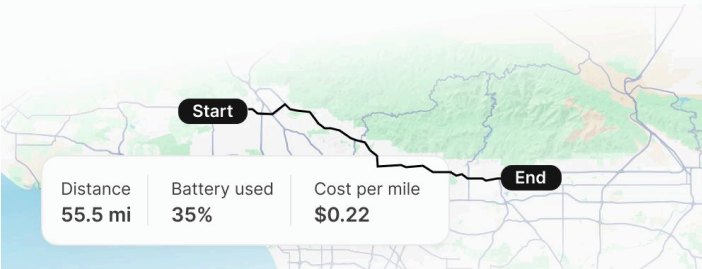
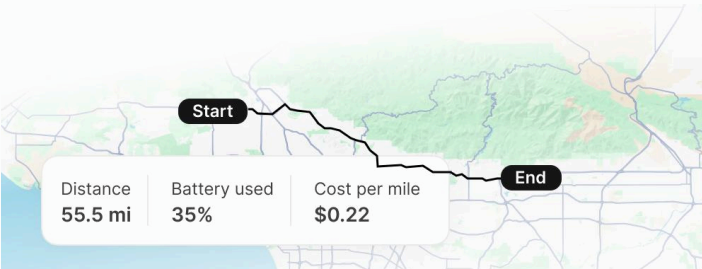
Flexible, user-friendly charger controls

Minimize utility costs by setting site power limits, charger- and vehicle-specific controls, and more.



Cost per mile and fleet efficiency insights

Fleet efficiency analytics provide visibility into regenerative braking, kWh/mile, cost/mile, and more.



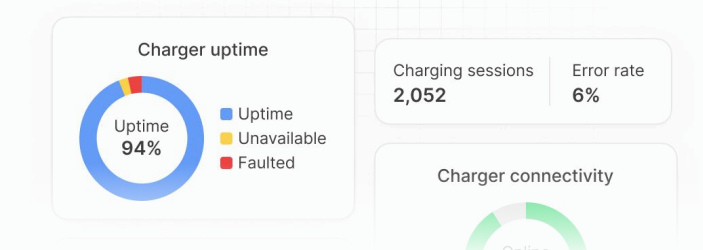
Distance 55.5 mi
Battery used 35%
Cost per mile \$0.22

Start

End

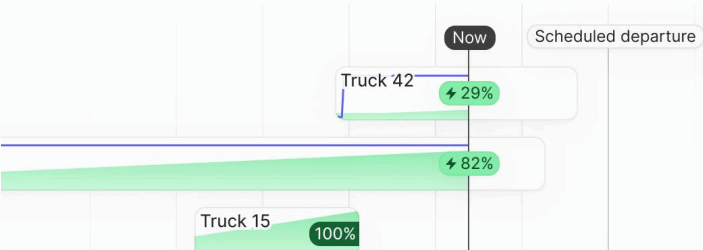
Charger health monitoring and error diagnostics

Track the uptime and connectivity health of your chargers. Quickly resolve issues with detailed diagnostics tools.



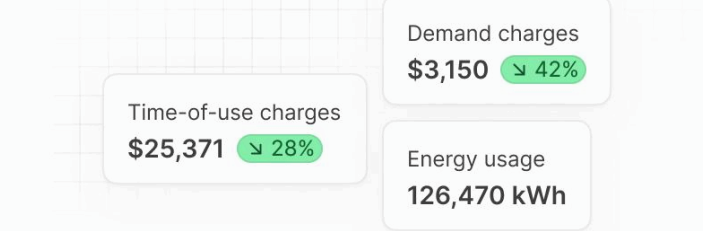
Charging schedules to ensure on-time departures

Sync charger management with route schedules to avoid delays, and get notified when charging is off track.



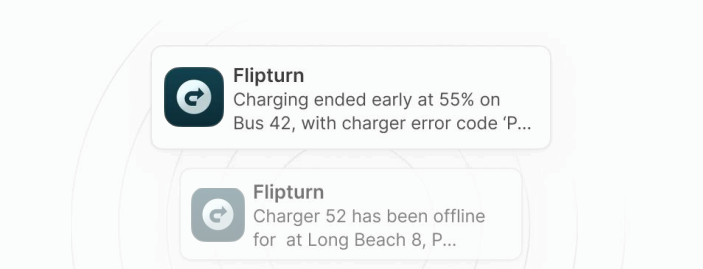
Utility cost reporting and billing management

Identify cost saving measures across charging sites. Track third-party usage to streamline billing workflows.



Real-time alerts on operational issues

Keep uptime high with text and email alerts when vehicles have low battery or there are problems with charging.



Customers love Flipturn for our quality, reliability, and responsiveness



Major Canadian courier

"Flipturn's product considerably reduces peak power demand and charging costs, and provides in-depth visibility into charger reliability. It is constantly improving and continuing to address our needs as we scale."

Jeff McAleese, Senior Manager



Heavy-duty trucking

"Whether your EV fleet is profitable is all about the utility bill. Without Flipturn's charger management system, we would be spending more on energy than a typical diesel truck. It's a huge part of successfully running a heavy duty EV fleet."

Jason Altamirano, Vice President



Charging-as-a-service

"Flipturn helps our team provide a fast, reliable, and easy charging experience to our customers, as well as saving us a lot of time on reporting and billing processes. [Their] iteration speed and support made working with them an easy choice."

Rick Eckert, VP of Operations



Drayage

"The data you're providing us will be critical to manage our day in real-time... Flipturn lets us manage our whole operation in one place along with providing us great KPI data to reduce costs while improving operations."

Brad Bayne, VP of Strategic Initiatives

Enhanced by AI to optimize your operations



Self-healing charger data reports accurate session timing and energy usage.



Automatic detection of the operational impact of charger errors.



Dynamic power management based vehicle and port power usage detection.



Smart charging time estimates based on learning historical charging curves.

Learn more

→ Email hello@getflipturn.com

→ Visit getflipturn.com/getdemo